



AFTER HOURS COMMUNITY BAND FAMILY PICNIC

SUNDAY, September 26

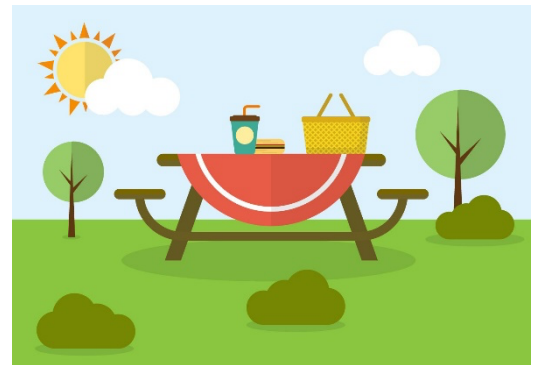
Gather at 1 p.m. Eat around 1:30 p.m.

Picnic Site #2 (PS02)
Greensfelder-Queeny Park
550 Weidman Road
Ballwin, MO 63011*

Directions to Picnic Site: As you enter Queeny Park, stay on the main road to the main parking lot and large playground. The picnic site is to the right, across from the parking lot and to the right of the playground. There is a paved walking path down a gradual hill to the site.

Food and Soft Drinks will be purchased and provided and served to you by band members who are masked and gloved. (Sandwiches, meat and veggie options, fried chicken, cold shrimp, potato salad, coleslaw, baked beans, chips, and cookies, from Schnuck's Deli.)

If you would feel safer or have special dietary needs or wish something other than water/soft drinks, please feel free to bring a picnic lunch and drinks for yourself and your family.



Bring lawn chairs-optional: There are plenty of picnic tables, but it is a mostly sunny spot. You may want to have a lawn chair for the many shade trees that surround the site.



ACTIVITIES: Eating, of course; Stimulating conversation; Large Playground; Walking Trail; Badminton; Bean Bag Toss a.k.a. Corn Hole; Volleyball, if we can find a net; Bocci Ball; and anything else you want to share with the group.

*In case of rain, we will gather at the Commerford House (Jack and Carol) with masks when inside. There will still be all the food to eat since we are ordering it in advance.

1919 Tower Bridge Terrace, 63146 314-583-8440