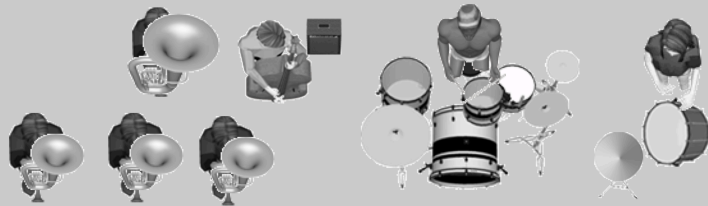
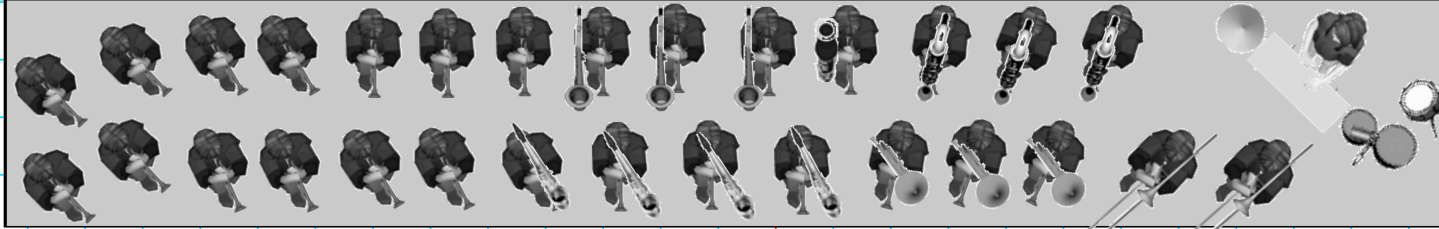


# After Hours Community Band at Harvester Christian Church

Extend to audience and close up Rev 4



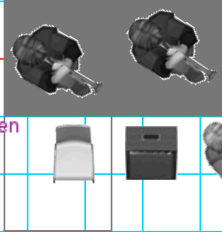
**Stage  
Upper Tier**



**Stage  
Lower Tier**

**4x8  
Stage  
Extension**

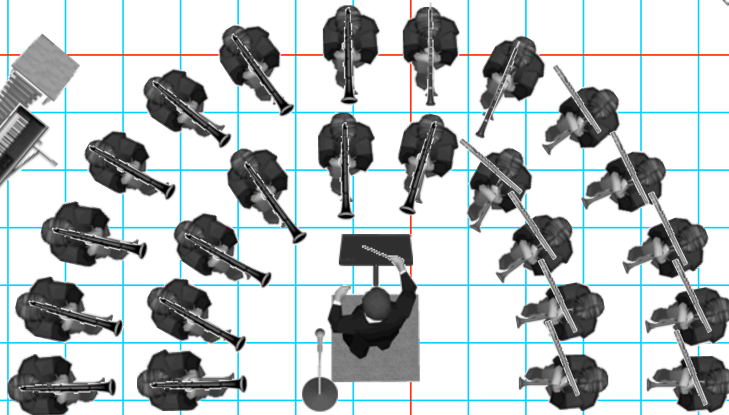
Extension even  
with left end  
of stage



**4x8  
Stage  
Extension**

Extension 4' in  
from right end  
of stage

**Main Floor**



Band extends 14' in  
front of stage. Ideally  
audience would start  
no-closer than 10'  
from front of band  
(24' total). Closer  
OK off to the sides.

- 4 Trombone
- 3 Horn
- 3 Tenor
- 4 Alto
- 3 Bass Cl
- 1 Bassoon
- 3 Baritone
- 1 Tuba
- 15 trumpet (up to)
- 24 flute + clarinet + oboe (up to)
- Set + BD + aux + mallets + bass